

the write up

PARK NEWSLETTER
SPRING 2021

DEVELOPMENT

**Addressing the lab shortage:
The Emmanuel Building**

TENANT NEWS

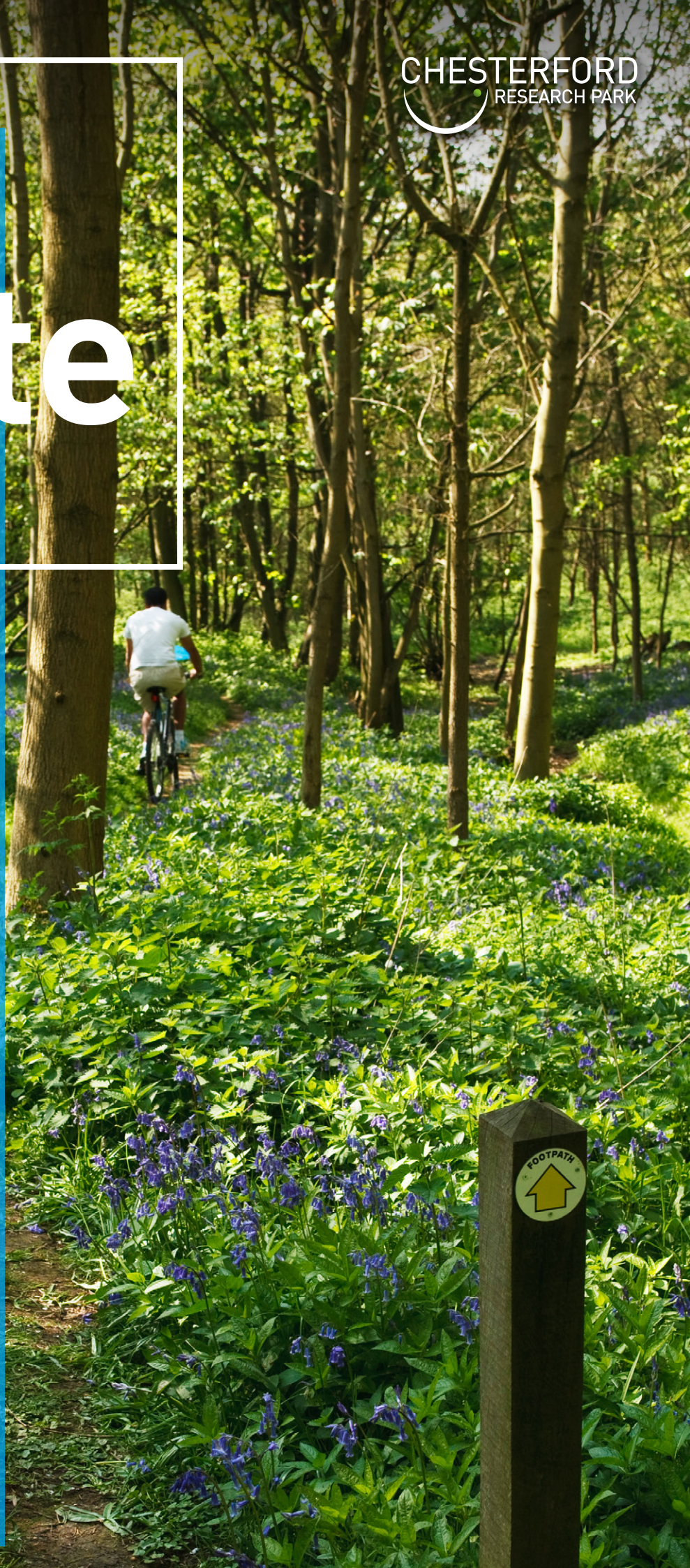
**Clean-tech company
Superdielectrics relocates to
Chesterford Research Park**

COMMUNITY

**Making the most of the
Park environment**

For more information contact:
Katherine Maguire, Park Manager
Katherine.Maguire@eu.jll.com

www.chesterfordresearchpark.com





Addressing the lab shortage: The Emmanuel Building

EMMANUEL BUILDING HAS UNDERGONE AN EXCEPTIONAL REFURBISHMENT

Having completed the transformation of the Newnham Building into fully-fitted laboratory and office accommodation in early December last year, the team at Chesterford has swiftly moved on to its next project - the refurbishment of the Emmanuel Building.

Recognising the acute need for fully-fitted laboratory space within the cluster, the refurbishment of the Emmanuel Building will give companies who want to be part of the Park's exceptional working environment - putting their employees at the heart of their property decisions - a rare opportunity to join our superb, innovative community.

The Emmanuel building has undergone an exceptionally detailed design process and allows for the building to be split into up to four self-contained fully fitted laboratory and write-up area suites ranging from 9,100 sq ft (845 sq m) to 9,600 sq ft (892 sq m) arranged across ground and first floors with a second-floor plant loft.

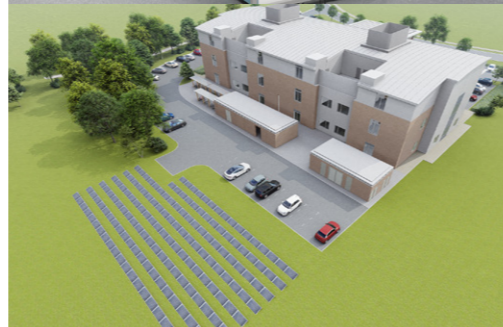
The internal specification includes:

- A main central lab in each suite, complemented by two additional smaller flexi labs, write up space, an enclosed meeting room and dedicated reception area.

- Two fume hoods per suite (with provision for a further four per suite in the main lab) and the ability to have a single fume hood in each of the two rear flexi labs.
- 30m deep floor plate.
- Provision of four separate sets of individual plant to facilitate each suite within the second floor plant loft.
- Shower facilities and Male & Female WCs in each suite.
- Two passenger lifts and two goods lifts.

A striking reception area will create the all-important first impression to prospective employees and visitors and whilst externally there is provision for 136 car parking spaces (with four 22Kw electric car charging points and four 7.4Kw electric car charging points within each suite's allocated car parking), and 28 cycle spaces to encourage healthy and sustainable commutes.

The Emmanuel Building is ideal for organisations which, although not quite at the point of requiring their own building, have scaled up significantly enough to require that next stage of space beyond start-up. The building will be ready for occupation this Summer.



Clean-tech company Superdielectrics relocates to Chesterford Research Park

THE SUSTAINABLE ELECTRICAL ENERGY STORAGE SPECIALIST SECURES SUITE 2 IN THE SCIENCE VILLAGE

The Park team was delighted to welcome material research company Superdielectrics to the Science Village Building in February this year.

Superdielectrics is developing high energy density, low cost, low environmental impact electrical energy storage devices that will help create a clean and sustainable global energy and transportation system. Supercapacitors store energy using electrodes and electrolytes and both charge and deliver energy quickly, unlike conventional batteries which perform the same task in a much slower way with the added hazard of end-of-life waste. Superdielectrics' supercapacitors are safe, fast, contain no rare materials or conflict metals and have the added benefit of reducing pollution and waste.

Jim Heathcote, CEO, Superdielectrics said: "Superdielectrics Ltd is delighted to have taken research and development laboratories at Chesterford Research Park. We are developing a completely clean and sustainable energy system using our unique high energy density supercapacitor materials.

"We are driven by strong environmental and social values which are shared by Chesterford Research Park. These are exciting times as we strive to tackle fundamental scientific problems that could reduce global poverty and starvation while cleaning up the environment."

Julian Cobourne, Senior Asset Manager, Aviva Investors, joint owners of Chesterford Research Park with Uttlesford District Council added: "I am thrilled that the

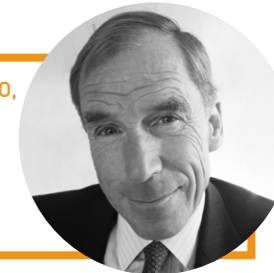
innovative team at Superdielectrics will be continuing their ground-breaking work at Chesterford Research Park. With its focus on sustainability and the environment, Superdielectrics' aims are complementary to that of the Park.

"Integral to the Cambridge biotech cluster, the Park continues to attract leading bioscience ventures. The fitted nature of the Science Village remains extremely popular with companies seeking 'plug and play' facilities, which negates the requirement for a protracted and sometimes expensive fit-out process. Superdielectrics are in good company in this truly unique setting with stunning natural parkland surroundings."

Jim Heathcote, CEO, Superdielectrics



Superdielectrics



Synthetic biology company, Camena Bioscience, expands presence at Chesterford Research Park

INCREASING DEMAND FOR CAMENA BIOSCIENCE PROPRIETARY TECHNOLOGY TRIGGERS EXPANSION WITHIN SCIENCE VILLAGE

February was a busy month at the Park! In addition to the arrival of Superdielectrics, we were delighted to be able to confirm the expansion of Camena Bioscience within Science Village. The developer of an industry-leading DNA synthesis technology renewed its existing lease for a further five years and in tandem took an additional 1,993 sq ft adjoining suite on the same terms.

Founded in 2016, Camena Bioscience has been based at Chesterford Research Park since its incorporation. The company's multi-enzymatic technology, called gSynth™, has dramatically improved the accuracy of DNA synthesis over the existing phosphoramidite-based methods. These improvements permit the efficient production of long, multi-gene, DNA constructs and problematic DNA sequences, which now helps Camena's customers to solve

complex biological problems.

Steve Harvey, CEO, Camena Bioscience said: "Chesterford Research Park's strong biotech history and prime location make it the ideal home for Camena's UK operations. Having developed our DNA synthesis technology gSynth™ here, it is very satisfying to now be able to expand our operations on site.

"The expansion will facilitate the build of a new high throughput DNA synthesis foundry to meet the increasing demand for our technology and allow us to continue to support and grow our relationships with the expanding synthetic biology community. Our aim is to be a leading enabler of new synthetic biology applications and with this expansion we are one step closer to that goal."

Katherine Maguire, Park Manager commented: "We are delighted that Camena Bioscience has chosen to continue this

next phase of growth at the Park. It has been a pleasure to witness the successful evolution of the company to date and to be able to play our part in providing the appropriate mix of accommodation at the right time as Camena continues to expand.

"As a Park team we are committed to developing long-term trusted relationships with our occupiers to ensure we continue to be able to match their growth ambitions with the provision of high quality laboratory and R&D facilities as well as the excellent amenity space expected of a location such as ours. As we continue to enhance and develop the Park our priority remains the creation and delivery of exceptional spaces for bioscience organisations across the development life cycle for the benefit of both existing and new occupiers."



Steve Harvey, CEO, Camena Bioscience





“We are proud that Innovate UK has chosen to invest in our research.”

Dr Sarah Howell,
CEO, Arecor



Arecor receives £2.8 million grant award from Innovate UK

THE GRANT WILL SUPPORT THE PHASE II DEVELOPMENT OF ARECOR'S ULTRA-RAPID ACTING INSULIN PRODUCT

Park based Arecor, the biopharmaceutical company advancing today's therapies to enable healthier lives, has been awarded a £2.8 million grant from Innovate UK. The grant will support the Phase II development of AT247, Arecor's ultra-rapid acting insulin product candidate which is based on its proprietary Arestat™ technology platform.

Sarah Howell, Chief Executive Officer of Arecor, said: "We are proud that Innovate UK has, through their thorough technical and commercial review process, chosen to invest in our research from across the very best of British science. Diabetes remains a significant and growing health problem throughout the world. AT247, the lead product from our pipeline of next generation rapid insulins is focused on transforming the lives of people living with Type 1 diabetes through its potential to enable greater glucose control. This control is critical in helping patients to avoid hyper- and hypo-glycaemia events, improve time in range and reduce overall disease complications. The substantial grant we are announcing today provides additional non-dilutive funding to support and accelerate AT247's Phase II development."

Microbiotica expands management team with appointments of Chief Medical Officer and Chief Operating Officer

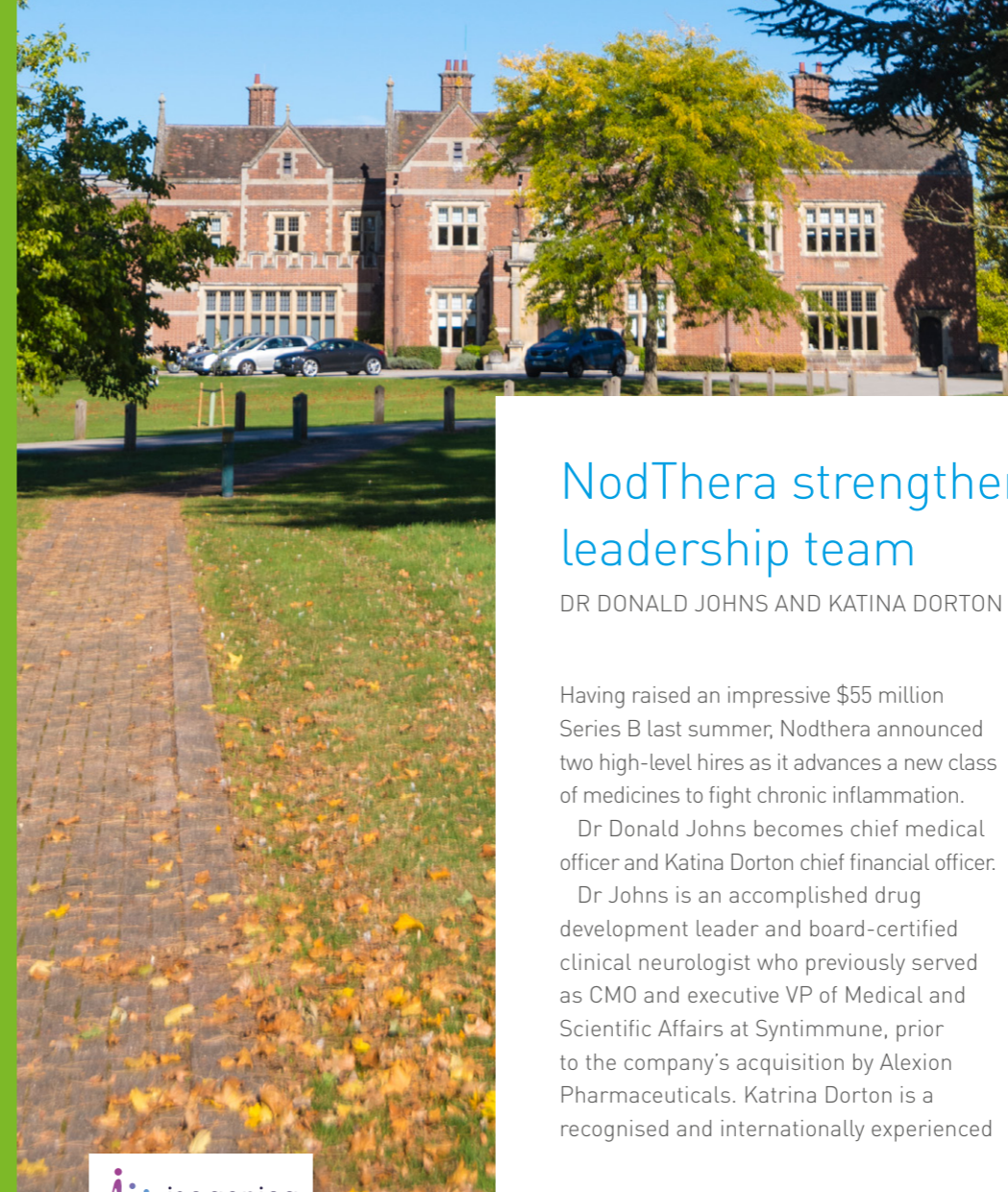
Microbiotica, a leading player in microbiome-based therapeutics and biomarkers, announced the appointments of Ronald Carter, MD, as Chief Medical Officer (CMO), and Tim Sharpington as Chief Operating Officer (COO) in early February.

Ron Carter joins as CMO at an important stage of its development, with major development programmes currently underway in immuno-oncology and IBD. He will be responsible for progressing the clinical development of Microbiotica's Live Bacterial Therapeutics and Biomarkers, and expanding its clinical footprint beyond the UK.

With over 30 years of clinical development experience across Europe, the US, Latin America and Asia in biotech and pharmaceutical companies, Ron most recently held the role of Senior Medical Director at Seres Therapeutics. He has previous experience within the microbiome space, having taken charge of multiple first-in-man studies across Europe that involved faecal microbiota transplantation in leukemia and GvHD (graft-versus-host disease).

Tim Sharpington has held executive and Board-level leadership positions in pharma, biotech and CRO companies in the UK and US, and as such has established a track record of leading, developing and executing company strategy, with experience in product development, fundraising, M&A and licensing. Prior companies include hVIVO, Vectura, Ixix, Arakis Ltd, ICON, Sequus Pharmaceuticals and Pfizer. Tim has led the successful development of several pharmaceutical products in the anti-infective, oncology and anti-inflammatory areas.

As COO, Tim will be responsible for development strategy and development operations across Microbiotica, working closely with CEO Mike Romanos to develop and execute the Company's corporate strategy and financing. He will also work closely with the Company's CMO and Chief Scientific Officer, managing Microbiotica's product portfolio.



Isogenica multi-year multi-target collaboration with Aro Biotherapeutics extended

THE SUCCESSFUL PARTNERSHIP STARTED IN 2018

Earlier this year, Isogenica announced that the collaboration and license agreement signed with Aro Biotherapeutics in June 2018 had been extended, following successful partnership to identify and characterise novel Centyrins™ against target antigens.

The Alliances team have applied their expertise by employing rigorous antigen quality control and developing highly efficient high throughput screening and purification techniques through optimised automation processes.

"A core value at Isogenica is to ensure we work collaboratively with our partners, investing in joint successes at the onset of

NodThera strengthens senior leadership team

DR DONALD JOHNS AND KATINA DORTON JOIN THE NODTHERA TEAM

Having raised an impressive \$55 million Series B last summer, Nodthera announced two high-level hires as it advances a new class of medicines to fight chronic inflammation.

Dr Donald Johns becomes chief medical officer and Katina Dorton chief financial officer.

Dr Johns is an accomplished drug development leader and board-certified clinical neurologist who previously served as CMO and executive VP of Medical and Scientific Affairs at Syntimmune, prior to the company's acquisition by Alexion Pharmaceuticals. Katrina Dorton is a recognised and internationally experienced

financial executive, corporate director and public company CFO. Her industry expertise includes roles in healthcare, life sciences and investment banking, including experiences at Repare Therapeutics and AVROBIO, Inc.

NodThera is advancing a portfolio of potent and selective inhibitors of the NLRP3 inflammasome that reduce both IL-1β and IL-18, pro-inflammatory cytokines which are known to play a role in chronic inflammation underlying a wide range of diseases. The pipeline includes brain penetrant NLRP3 inhibitors for central nervous system indications.





Nucleus Restaurant now open!

WELCOME BACK FROM THE TEAM!

The catering team are delighted to be back and are looking forward to welcoming you over the coming weeks. Open between 8.15am and 2pm for breakfast rolls, hot beverages and full lunch service – you can either take-away, eat-in or dine alfresco. A new menu each week will tempt you in and will include firm favourites like Buttermilk Chicken Burger, Spiced Beef Wrap, Oriental Vegetable Stir Fry and Homemade Chicken and Mushroom Pie. If that's not mouth-watering enough we don't know what is!



Making the most of the Park environment

ENJOY OUR WONDERFUL, LANDSCAPED GROUNDS WITH A RANGE OF OUTDOOR CLASSES AND ACTIVITIES

April has signalled a return to the Park for many, and it's fantastic to see people out and about once again. We are very fortunate to be able to enjoy our wonderful, landscaped grounds, be that for a stroll at lunchtime or something slightly more energetic!

Until we are able to offer indoor fitness classes again, the Nucleus Health & Fitness Team, led by Dan and Danny, have organised outside Bootcamp

classes three times a week on the Mansion House lawn. Classes run every Monday, Wednesday and Friday from 1215-1300hrs and you don't have to be a member to take part.

The trim trail, situated within the arboretum, is also available for your use and includes monkey, chin-up and parallel bars.

Our 7-hole par 3 golf course is also now open. Available to occupiers and

gym members you are most welcome to take advantage of this unique facility Monday – Friday from dawn to dusk.

Finally, don't forget the various running and walking routes around the Park. If you found your walking or running feet during lockdown, continue with your training at the Park by exploring one or more of our routes!

For more information about all these facilities please contact the gym team.